



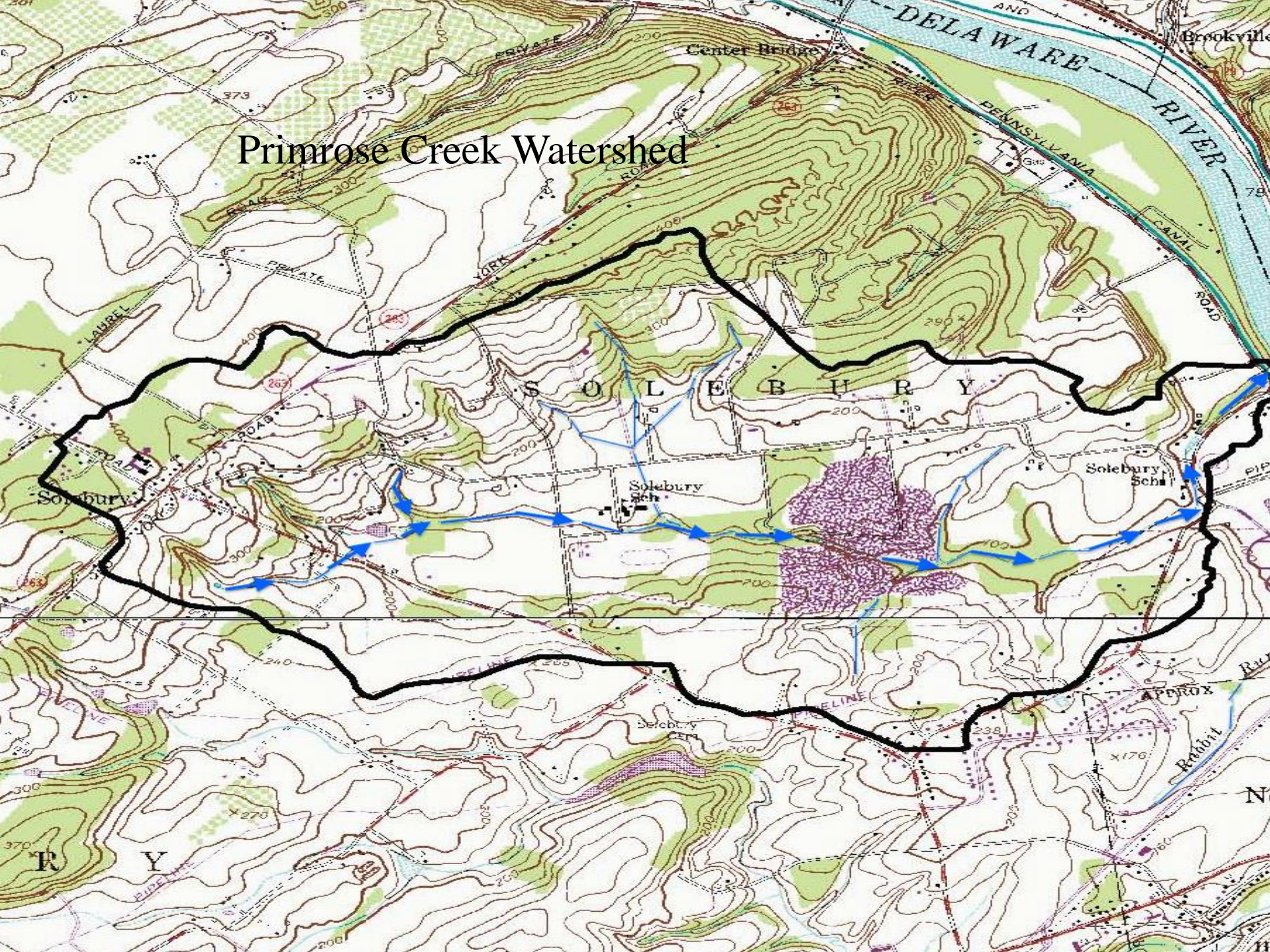
Primrose Creek

Bucks County

New Hope-Solebury PA

A little creek/watershed with BIG issues...

Primrose Creek Watershed





Little Primrose's Big Issues

A quarry divides the Primrose into an upper and lower reach

Dewatering the aquifer

Formation of sinkholes

Dry stream sections

Dry wells

Degraded water quality

Habitat loss

Algaecide dumping

Invasive plants



Welcome to Lime Port, Bucks Co?

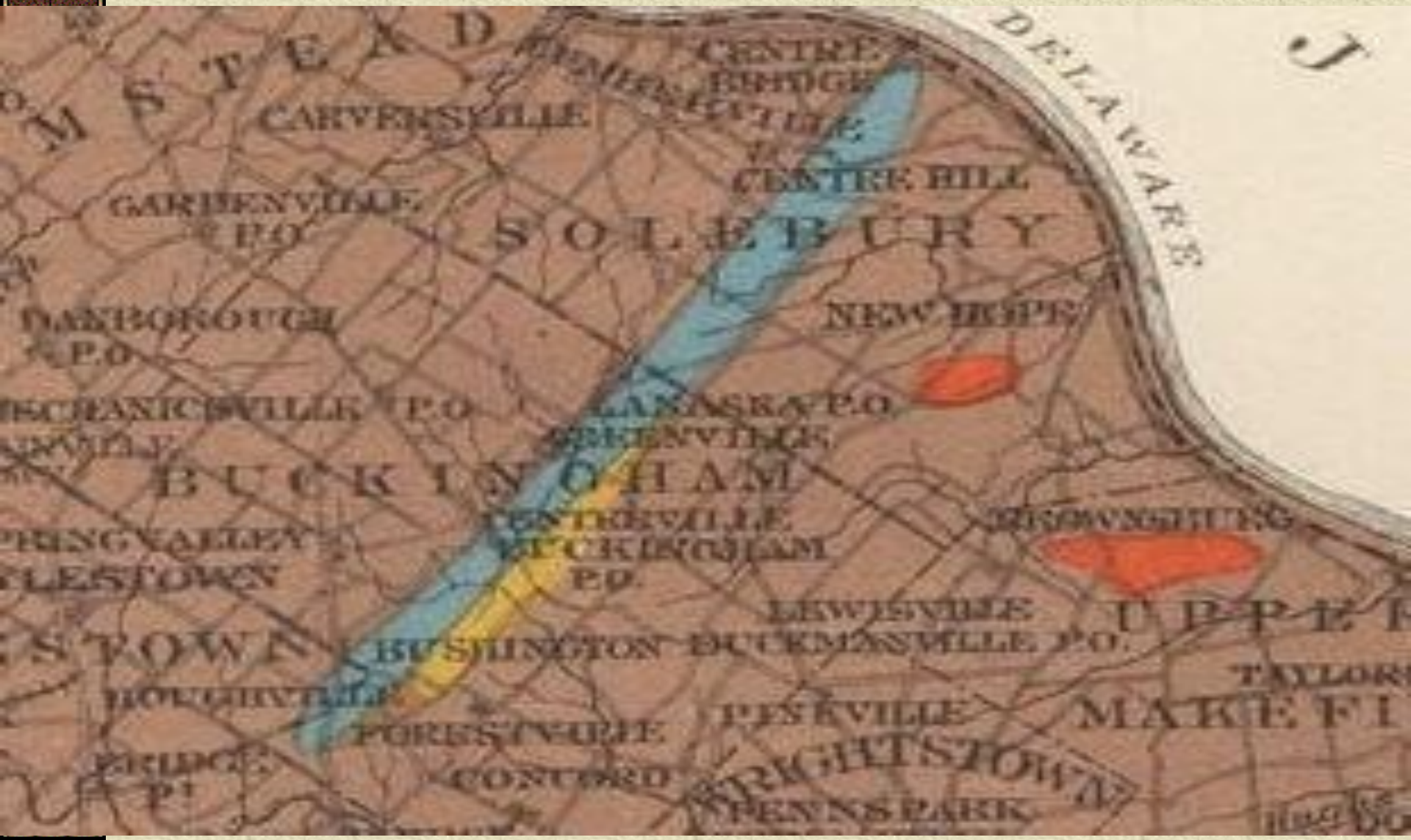






Figure 1. 2005 DVRPC Aerial Photography showing Primrose Creek Watershed in proximity to New Hope Crushed Stone quarry. Survey stations shown as red triangles, On-stream sinkhole shown as pink asterisk, channel head-cut shown as red line.



drwisensors.dreamhosters.co



conductivity, temperature, and depth.

Show all data in the database [as table](#) or
[as CSV text](#)
[Get raw CSV text file](#)

Latest readings:

At 2019-01-17 14:20:31 EST:
CTD Depth= 190.3mm, CTD Temp=
4.7 degreesC, CTD Conductivity= 434.7
uS/cm
Board Temp= 2.8 degreesC; Battery=
4.05 volts



Water Depth and Conductivity, last 48 hours



**Historic
Data**

[Water depth](#)

[Conductivity](#)

Temperature, last 48 hours

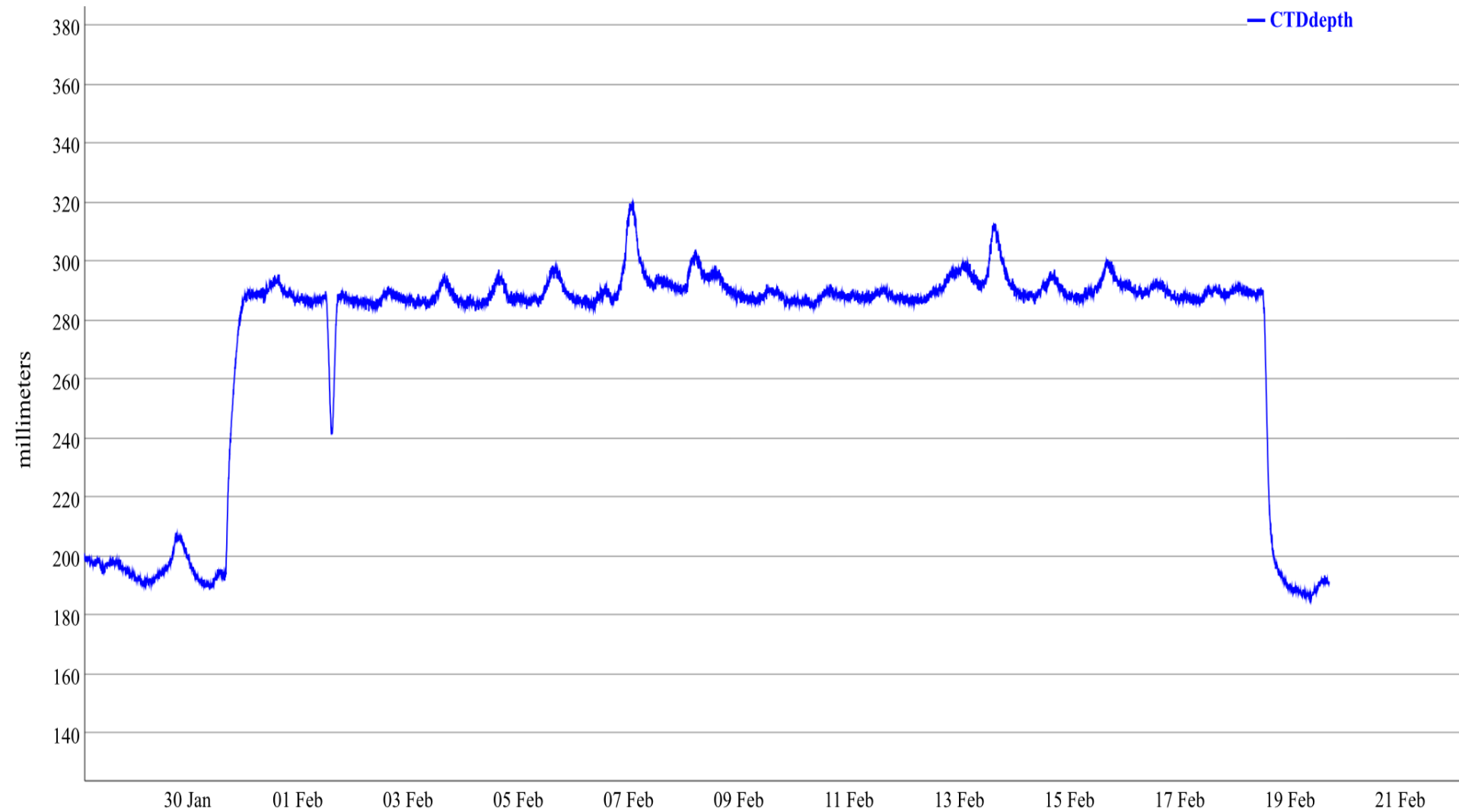


[Temperatures](#)

SL159 - Water Depth

Water Depth (in millimeters)

Highlight to zoom in, double-click to zoom out.











SL158 Turbidity/CTD Logger

This is data from logger SL158.
The logger is equipped with a [Decagon CTD](#) which measures water conductivity, temperature, and depth.

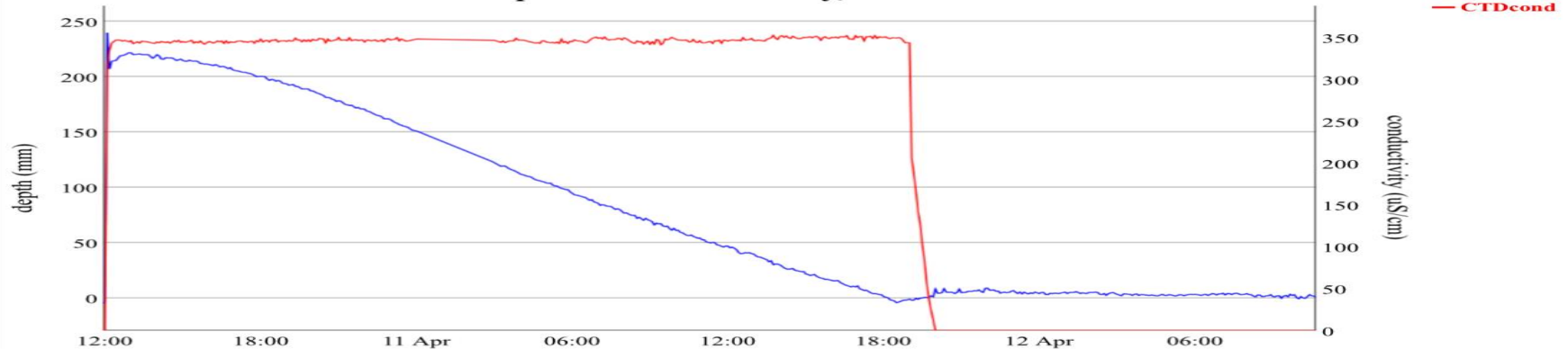
Show all data in the database [as table](#) or [as CSV text](#)
[Get raw CSV text file](#)

Latest readings:

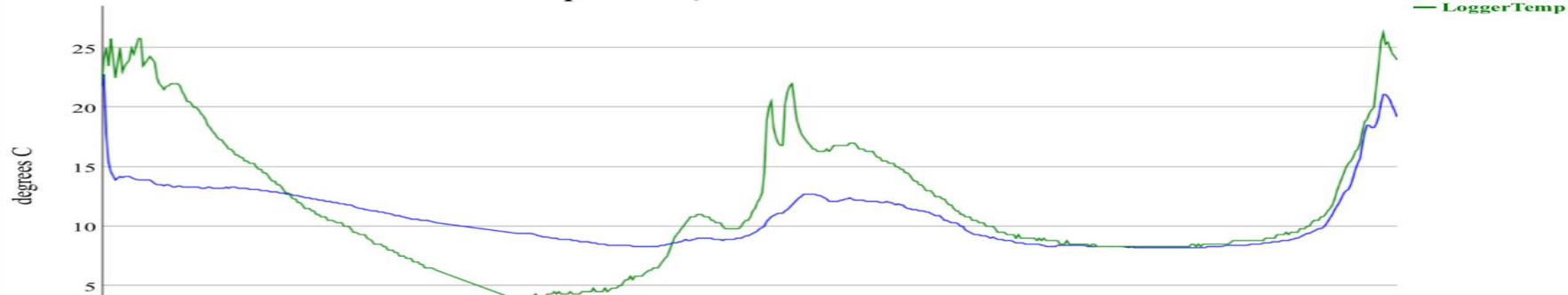
At 2019-04-12 10:40:46 EST:
CTD Depth= 0.7mm, CTD Temp= 19.2 degreesC, CTD
Conductivity= 0 uS/cm
Board Temp= 24 degreesC; Battery= 4.11 volts



Water Depth and Conductivity, last 48 hours



Temperature, last 48 hours







SL158 Turbidity/CTD Logger

This is data from logger SL158.
The logger is equipped with a [Decagon CTD](#) which measures water conductivity, temperature, and depth.

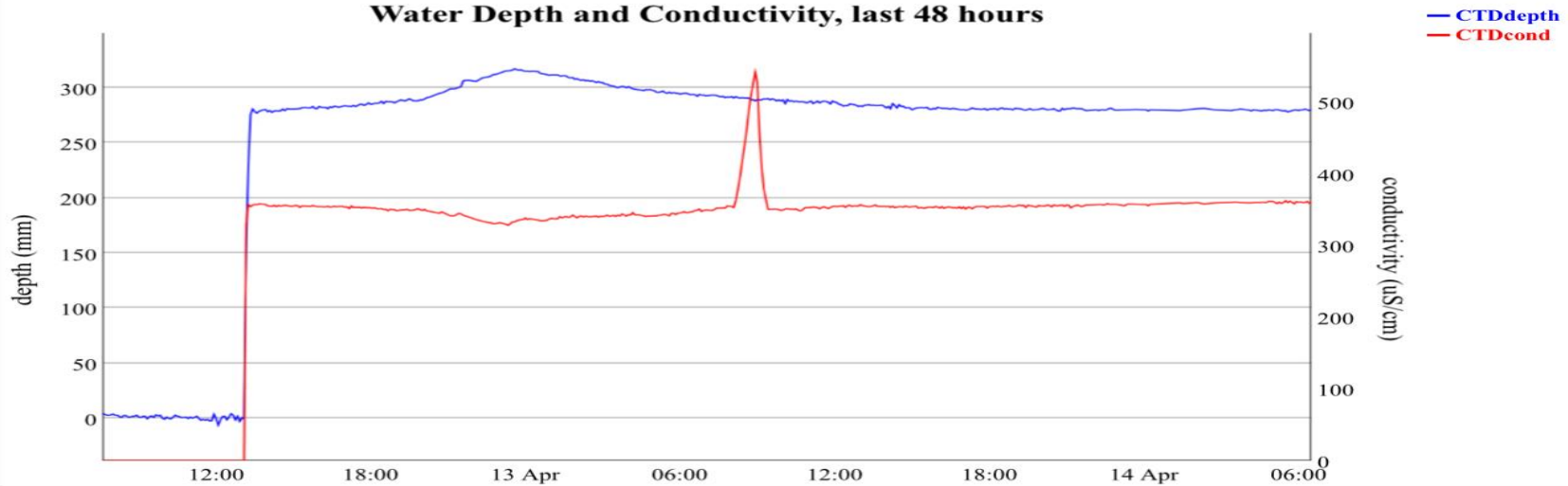
Show all data in the database [as table](#) or [as CSV text](#)
[Get raw CSV text file](#)

Latest readings:

At 2019-04-14 06:30:47 EST:
CTD Depth= 280.3mm, CTD Temp= 15.5 degreesC, CTD
Conductivity= 360.7 uS/cm
Board Temp= 12 degreesC; Battery= 4.06 volts



Water Depth and Conductivity, last 48 hours



Temperature, last 48 hours





Primrose Creek Watershed Goals

Short Term

Environmental education collaboration with Stroud WRC

Stream bank buffer improvement

Awareness of septic dumping management and agricultural BMPs

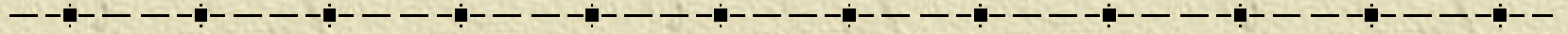
Long Term

Quarry reclamation plans

Stream bed stabilization



Our Main Big Ideas for our little community ...



Citizen scientist student stewardship

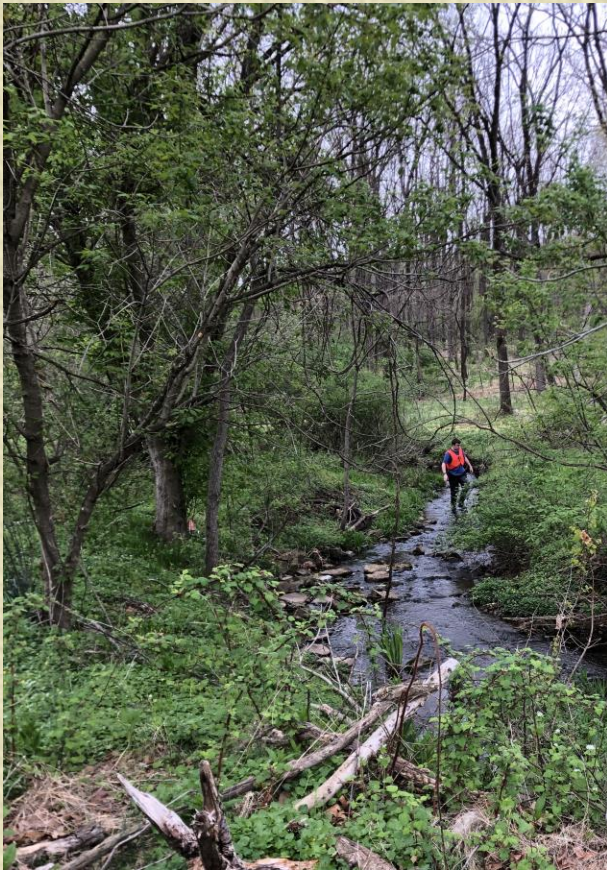
Community education and awareness

These ideas give us “New Hope”

(Our local watershed pun)

The Key Educational Outcome

Prepare the students with **transferable environmental stewardship skills** linked to their community.









“to do it on their own”

Pollution Tolerance Indexing

What is the relationship between ?

Macro invertebrate PTI and water quality..

<input type="checkbox"/>	Mayfly Nymph	
<input type="checkbox"/>	Other Caddisfly Larva	
<input type="checkbox"/>	Dobsonfly Larva	
<input type="checkbox"/>	Riffle Beetle	
<input type="checkbox"/>	Water Penny	
<input type="checkbox"/>	Right-handed Snail	
<input type="checkbox"/>	Total Number of TAXA	
<input type="checkbox"/>	Weighting Factor	

	Mon	May
2	Crane Fly	
3	Stone Fly	
2	Dragon Fly	
3	Right Snail	
1	A. worm.	
1	Diptera Fly	
3	May Fly	
2	Water mites	
2	Damselfly	
19		
Environmental class		





Water Quality Monitoring

PCWA