

WELCOME!

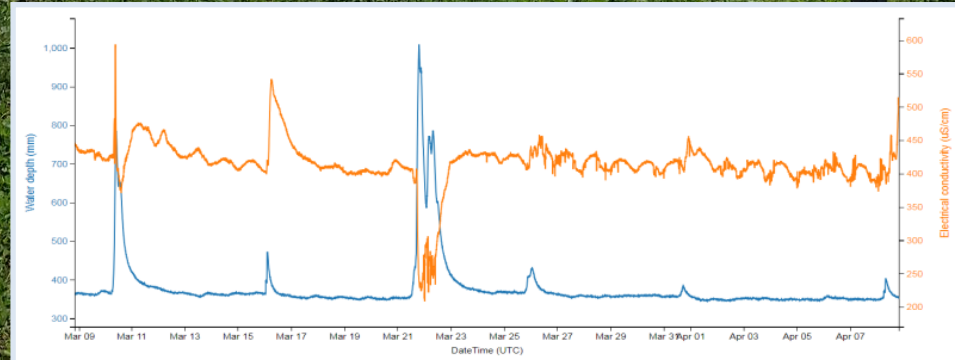
Monthly EnviroDIY-DRWI User Group Meeting

Online, Thursday March 18, 2021, 2:30-3:30p



 EnviroDIY

 Monitor My Watershed®



STROUD
WATER RESEARCH CENTER

These Monthly Meetings

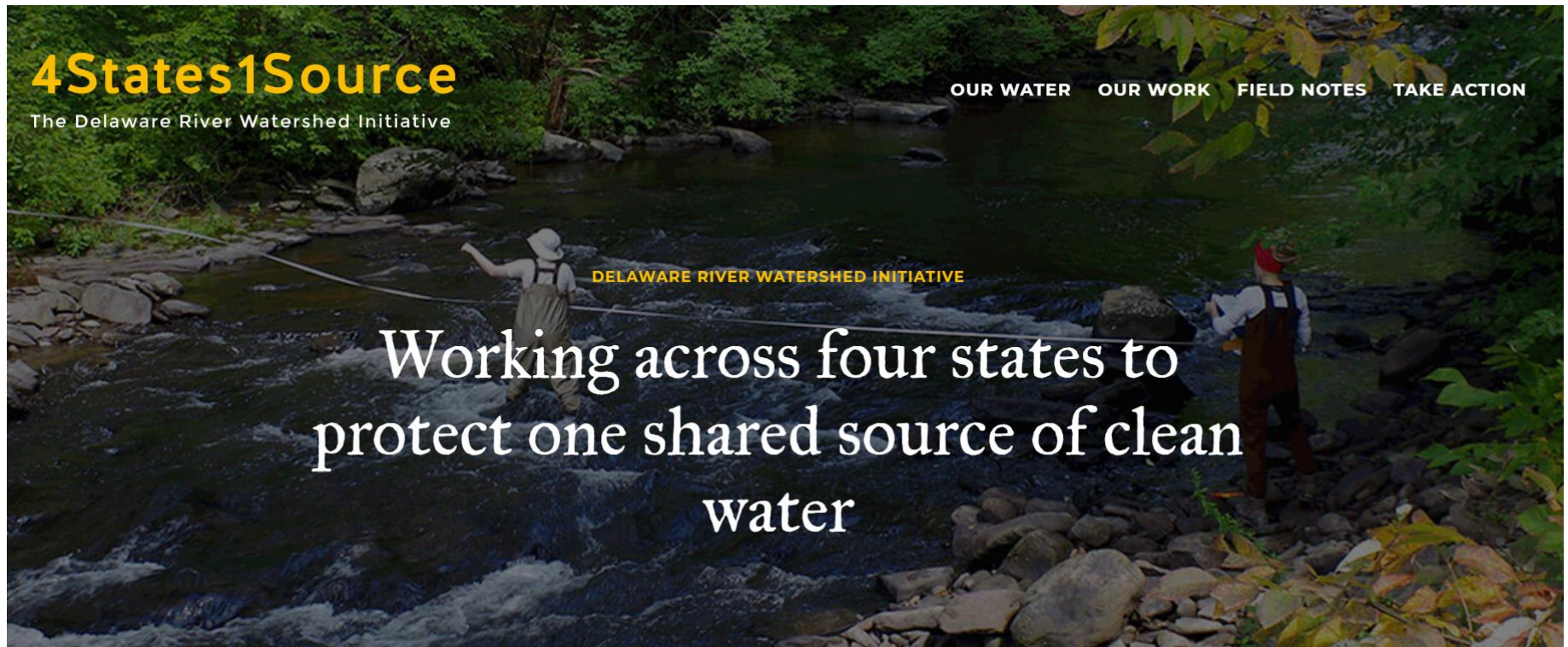
- Every third Thursday of the month
- 2:30-3:30p
- Zoom link will remain the same:
<https://us02web.zoom.us/j/81881801310?pwd=eUFmbXZLbmRibVcxa1dtNVhzRmNvZz09>
- Reminder email will be sent one week prior to each month's meeting
 - Station owners/managers organize volunteers/others to attend and share Zoom link

REMINDER

- Attendees include:
 - Groups working in Delaware River Watershed Initiative
 - Groups working in Delaware Basin but not DRWI
- Stroud Center support via DRWI and C-SAW

Delaware River Watershed Initiative

<https://4states1source.org/>



C-SAW

<https://www.c-saw.info/>



Home

What's Available?

Who's Eligible?

Who Provides Assistance?

Apply

News

Resources

Contact



What is C-SAW?

The Consortium for Scientific Assistance to Watersheds (C-SAW) is a team of specialists who provide *free* organizational and scientific technical assistance to Pennsylvania-based watershed and conservation organizations.

C-SAW does not conduct watershed monitoring or assessments. Instead, C-SAW helps watershed organizations do a better job with their own monitoring and assessments.

Goals for these monthly meetings

- **Time/space to check-in, ask questions, report issues, network, etc.**
- **Updates** from Stroud Center
- **Presentations**
 - **Station Owner/Manager Presentations** – communicate about individual situations, local watershed work
 - **Focus Topic Presentations** – guest presenters talk about technical/ecological/other focus topics

****All of this to support gathering good data and using it purposefully***

Facilitators

Stroud Center Facilitators:

David Bressler, Rachel Johnson, Christa Reeves, Shannon Hicks



Master Watershed Steward Facilitators:

Carol Armstrong, George Seeds (Chester & Delaware Co.)

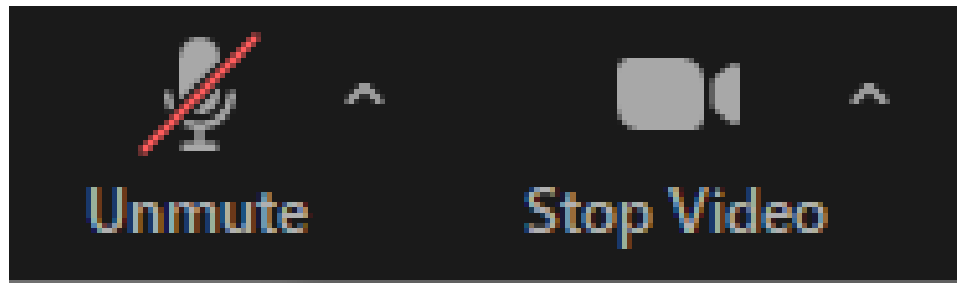




Zoom Orientation



***Meeting is being recorded**



***Mute unless asking question**

These Monthly Meetings

Recordings available at: <https://wikiwatershed.org/drwi/>



Search



August 2020 EnviroDIY-DRWI Monthly Meeting

15 views • Aug 25, 2020

0 0 SHARE SAVE ...

Monthly Meeting Agenda Format

1. Introduction
2. Stroud Updates
3. Presentation(s)
4. Open discussion
5. Conclusion

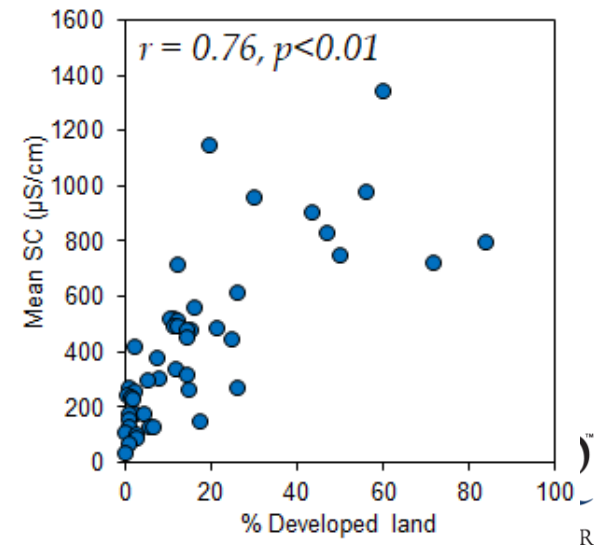
****Adjust this format according to natural progression/development/needs of meetings***

Today's Agenda

1. Introduction, review agenda, updates – 5-15 min
2. Monthly presentation – 30-35 min
 - Turbidity: What is it? Why do we measure it? How is it used to assess stream health?
Part 2, Sara Damiano, Stroud Water Research Center
3. Open discussion – 10-25 min
4. Conclusion

Stroud Center Perspective – EnviroDIY in DRWI

- Primary Goal
 - Support Station owners, managers, and volunteers
 - Use stations for local purposes
- Secondary Goal
 - Analyze basin-wide data set
 - Develop tools to characterize and contextualize watersheds



Any questions before we move on?



Monthly station owner/manager presentation

Turbidity: What is it? Why do we measure it? How is it used to assess stream health? Part 2



**Sara Damiano, Stroud Water Research Center,
Research Technician**

Zoom Survey

Stroud Center Updates



SCHUYLKILL RIVER GREENWAYS – WATER QUALITY SAMPLING PROTOCOL

BERKS, CHESTER, MONTGOMERY, & PHILADELPHIA COUNTIES, PA

SEPTEMBER 2020

PREPARED FOR:

SCHUYLKILL RIVER GREENWAYS
ATTN: MR. TIM FENCHEL
DEPUTY DIRECTOR
140 COLLEGE DRIVE
POTTSTOWN, PA 19464

PREPARED BY:

PRINCETON HYDRO, LLC
203 EXTON COMMONS
EXTON, PA 19341
908-235-5660

Contact Mike Hartshorne:
mhartshorne@princetonhydro.com

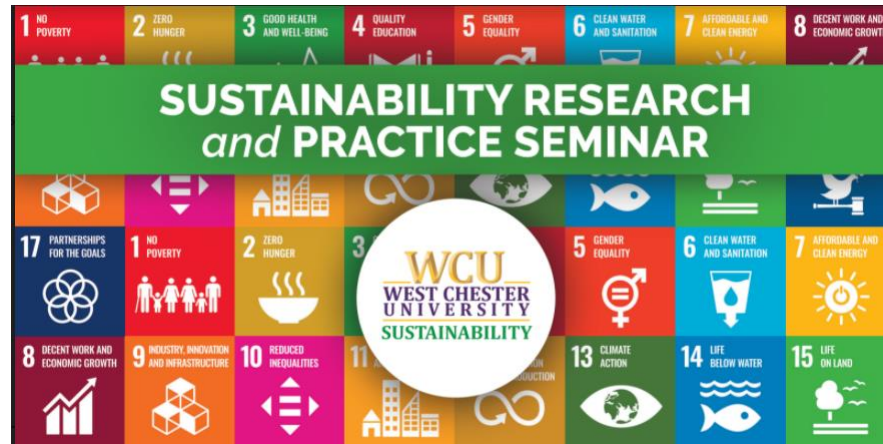
COMMUNITY SCIENTIST GUIDE TO VISUAL MONITORING ASSESSMENTS ON THE SCHUYLKILL RIVER

**Looking for
volunteers for visual
trash assessment of
Schuylkill River
between Reading and
Philly**



USING YOUR MOBLIE DEVICE, SIMPLY RECORD THE TRASH
ACCUMULATION OR DUMPING POINTS ALONG A 100-FOOT
SECTION OF THE SCHUYLKILL RIVER.

Stroud Center Updates



March 24, 2021

Professor Martin Helmke, Earth & Space Sciences,
Abigail Keebler, B.S. Geoscience 2021, and
Patricia Haug, M.S. Geoscience 2020

*WCU's Geoexchange System, Stream Salinization, and
Heated Sidewalks: Exercises in Sustainable Connections*

Wednesday March 24 from 12:00 to 12:50 pm via Zoom
<https://wcupa.zoom.us/j/94812143774>, passcode: 246583

Stroud Center Updates



Current volatility of cell boards

- The Stroud Center team is diligently investigating more reliable and sustainable tech improvements
- Shannon Hicks, Sara Damiano and others are staying up with tech improvement options

Stroud Center Updates

Manage My Watershed (<https://managemywatershed.org/>) has been launched!



About

Stories ▾

Tools ▾

Questions

Members ▾



Login

Register

Recently Shared Stories

[See all stories](#)



[Saving Primrose Creek](#)



Francis Collins / No Comments



[Persistence Is The Salt Of Stream Stewardship](#)



Carol Armstrong / No Comments



[Investigating Road Salt And Deicer Stream Contamination During A Snowstorm](#)



George Seeds / No Comments

Reminder: Resources to Support the Work

<https://wikiwatershed.org/drwi/>

General Resources

- ✓ EnviroDIY Field Visit Data
- ✓ EnviroDIY Monitoring Station Help Resources
- ✓ Data and Data Visualization Resources
- ✓ Volunteer Management Guidance Materials
- ✓ WikiWatershed Toolkit
- ✓ Project Updates

Meetings, Workshops, and Conferences

- ✓ Monthly EnviroDIY-DRWI User Group Meetings
- ✓ User Support Workshops and Trainings
- ✓ Conference Presentations
- ✓ Watershed Ecology Workshops

Questions/Discussion

- Questions for today's presenters?
- Questions about your station(s)?
- Questions about field visits and Quality Control?
- Questions about Monitor My Watershed?
- Questions about data patterns, ecology?
- Questions about troubleshooting?

Conclusion

Next month's meeting will be on:

Thursday April 15, 2021
2:30-3:30p

Future meeting presenters

- April 15 – Patty Haug, West Chester University, Continuous monitoring of five streams draining the borough of West Chester, PA
- May 20 – ??David Bressler, Stroud Center, Trends in continuous data across the DRB in relation to land use
- June 17 – ??Open, volunteers?
- July 15 – Mike Burns, Villanova (Naylors Run)

***Please be in touch if you'd like to do an owner/manager presentation or a focus topic presentation**

Monthly Meetings

- Every third Thursday of the month
- 2:30-3:30p
- Zoom link will remain the same:
<https://us02web.zoom.us/j/81881801310?pwd=eUFmbXZLbmRibVcxa1dtNVhzRmNvZz09>
- **Station owners/managers organize volunteers/others to attend and share Zoom link**

Mentors currently available

- Carol Armstrong (MWS), mnem.np@gmail.com, 610-659-7477
- George Seeds (MWS), geoseeds@verizon.net, 484-886-9586
- Rachel Johnson (Stroud Center), rjohnson@stroudcenter.org, 973-557-8995
- Christa Reeves (Stroud Center)(in the north, situational), christa@musconetcong.org, 727-520-5849

****Anyone else interested? If so get in touch with Stroud Center or Carol or George***

Resources to Support the Work

- **Delaware Basin EnviroDIY Monitoring Stations**, private online group (<https://wikiwatershed.org/groups/delaware-basin-sensor-stations/>)

Delaware Basin EnviroDIY Monitoring Stations



- Pose questions to the user group community
- Check for updates and new posts
- Set it for daily or weekly email updates

Onward!

Stroud Water Research Center, EnviroDIY-DRWI contacts:

- David Bressler, dbressler@stroudcenter.org, 410-456-1071
- Shannon Hicks, shicks@stroudcenter.org, 610-268-2153 x267
- Rachel Johnson, rjohnson@stroudcenter.org, 973-557-8995
- Christa Reeves, christa@musconetcong.org, 908-537-7060

Master Watershed Stewards, EnviroDIY-DRWI contacts:

- Carol Armstrong, mnem.np@gmail.com, 610-659-7477
- George Seeds, geoseeds@verizon.net, 484-886-9586

Rachel Becker-Klein
2:24 PM (20 minutes ago)
to me, Mary

Dave, so the deal is that you have to create the Zoom polls within your own Zoom account (or whichever will be the host). You should have the info you need to do so with (1) and (2) below...

- (1) How was the depth of information provided?
Too deep, Just right, Not deep enough
- (2) How useful was the presentation?
Not very useful, Somewhat useful, Quite useful, Very useful

For the two open-ended/word cloud questions through Poll Everywhere (or another platform if you have a preference):

- Please describe the most useful things you learned from this meeting
- What other resources/information would you need in order to apply what you learned in this meeting?

You provide a link (I created this one that you can use: **[PollEv.com/rachelbecker341](https://poll-ev.com/rachelbecker341)**) in the chat window and when people navigate to that, they get those two questions. As they respond, a Word Cloud is generated and you can share that word cloud with the group, and then we can download their responses to do more analysis if we want.

I should be able to join the monthly meeting for the last 1/2 hour (if that's not too disruptive), but I have an Advisory meeting for an NSF grant from 1-3 that day.

I do have some time next Tuesday, Dec 15 (anytime except for 2-3 pm) if you want to try any of this out...

Rachel